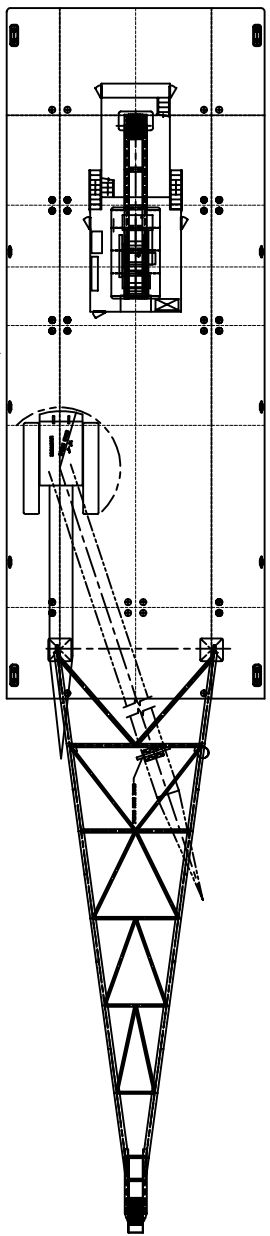
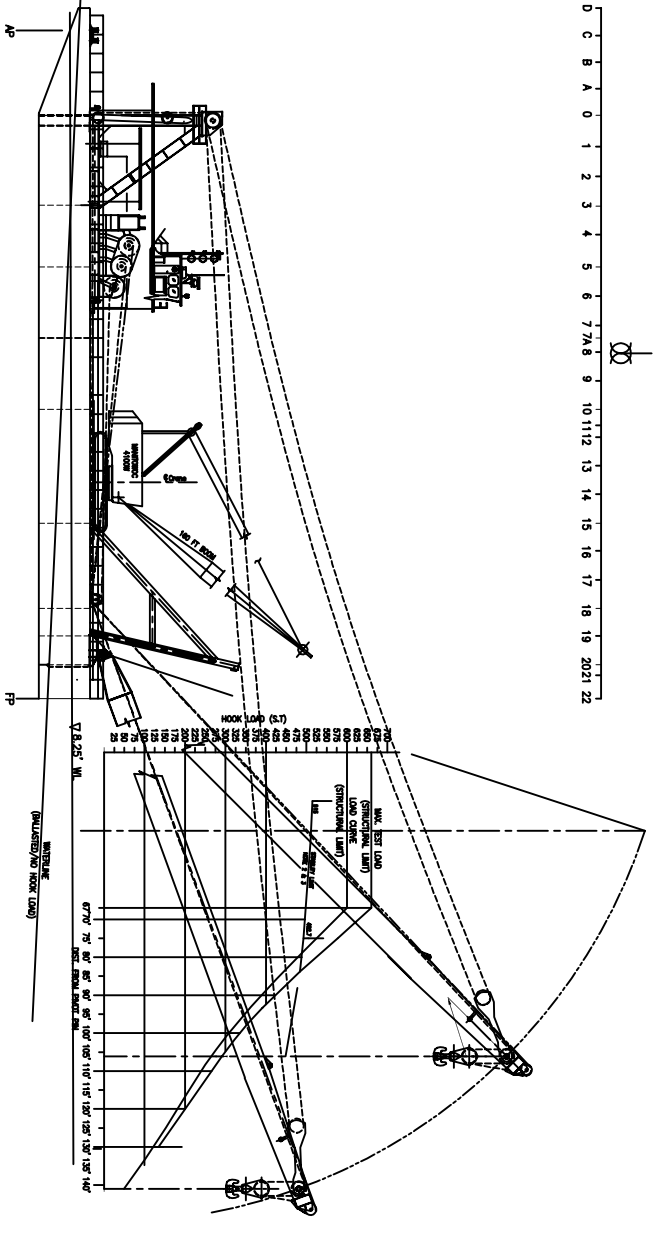


ZONE/LTR	DESCRIPTION	DATE	APPROVED
- A	VESSEL FILE	11/13/91	-



0 1 2 3 4 5 6 7 8 9 10 11 12 13 14 15 16 17 18 19 20 21 22



NO.	DESCRIPTION	UNIT	QTY
107	WALRUS		2
108	STRUTTING LUG		2
109	LOAD CHAIN		2
110	STRUTTING LUG		2
111	LOAD CHAIN		2
112	STRUTTING LUG		2
113	LOAD CHAIN		2
114	STRUTTING LUG		2
115	LOAD CHAIN		2
116	STRUTTING LUG		2
117	LOAD CHAIN		2
118	STRUTTING LUG		2
119	LOAD CHAIN		2
120	STRUTTING LUG		2
121	LOAD CHAIN		2
122	STRUTTING LUG		2
123	LOAD CHAIN		2
124	STRUTTING LUG		2
125	LOAD CHAIN		2
126	STRUTTING LUG		2
127	LOAD CHAIN		2
128	STRUTTING LUG		2
129	LOAD CHAIN		2
130	STRUTTING LUG		2
131	LOAD CHAIN		2
132	STRUTTING LUG		2
133	LOAD CHAIN		2
134	STRUTTING LUG		2
135	LOAD CHAIN		2
136	STRUTTING LUG		2
137	LOAD CHAIN		2
138	STRUTTING LUG		2
139	LOAD CHAIN		2
140	STRUTTING LUG		2
141	LOAD CHAIN		2
142	STRUTTING LUG		2
143	LOAD CHAIN		2
144	STRUTTING LUG		2
145	LOAD CHAIN		2
146	STRUTTING LUG		2
147	LOAD CHAIN		2
148	STRUTTING LUG		2
149	LOAD CHAIN		2
150	STRUTTING LUG		2
151	LOAD CHAIN		2
152	STRUTTING LUG		2
153	LOAD CHAIN		2
154	STRUTTING LUG		2
155	LOAD CHAIN		2
156	STRUTTING LUG		2
157	LOAD CHAIN		2
158	STRUTTING LUG		2
159	LOAD CHAIN		2
160	STRUTTING LUG		2
161	LOAD CHAIN		2
162	STRUTTING LUG		2
163	LOAD CHAIN		2
164	STRUTTING LUG		2
165	LOAD CHAIN		2
166	STRUTTING LUG		2
167	LOAD CHAIN		2
168	STRUTTING LUG		2
169	LOAD CHAIN		2
170	STRUTTING LUG		2
171	LOAD CHAIN		2
172	STRUTTING LUG		2
173	LOAD CHAIN		2
174	STRUTTING LUG		2
175	LOAD CHAIN		2
176	STRUTTING LUG		2
177	LOAD CHAIN		2
178	STRUTTING LUG		2
179	LOAD CHAIN		2
180	STRUTTING LUG		2
181	LOAD CHAIN		2
182	STRUTTING LUG		2
183	LOAD CHAIN		2
184	STRUTTING LUG		2
185	LOAD CHAIN		2
186	STRUTTING LUG		2
187	LOAD CHAIN		2
188	STRUTTING LUG		2
189	LOAD CHAIN		2
190	STRUTTING LUG		2
191	LOAD CHAIN		2
192	STRUTTING LUG		2
193	LOAD CHAIN		2
194	STRUTTING LUG		2
195	LOAD CHAIN		2
196	STRUTTING LUG		2
197	LOAD CHAIN		2
198	STRUTTING LUG		2
199	LOAD CHAIN		2
200	STRUTTING LUG		2

VESSEL PARTICULARS:
 1) VESSEL CLASS: ABS OCEANS
 2) VESSEL NAME: JEFFERSON
 3) TONNAGE: 2200 GROSS DEADWEIGHT: 12/3
 4) PROPULSION: NONE
 5) ACCOMMODATIONS: NONE
 6) FUEL: 500 U.S.G.
 7) WATER: 300 U.S.G.

WARNING
 THIS DRAWING IS FOR ILLUSTRATION PURPOSES ONLY. DO NOT USE FOR CONCEPT, DESIGN, CONSTRUCTION, OR ANY OTHER PURPOSE.

PROPRIETARY RIGHTS
 THIS DOCUMENT DISCLOSES MATTER IN WHICH INDUSTRY ENGINEERING ASSOCIATES, INC. HAS PROPRIETARY RIGHTS. NEITHER RECEIPT NOR POSSESSION HEREOF CONSTITUTES OR SHALL BE TAKEN AS PART OF ANY AGREEMENT CONTAINED HEREIN EXCEPT BY WRITTEN AGREEMENT WITH INDUSTRY ENGINEERING ASSOCIATES, INC. IN THE EVENT OF A PURCHASE OF THIS DOCUMENT, THE PURCHASER SHALL BE CONSIDERED TO HAVE AGREED TO HOLD INDUSTRY ENGINEERING ASSOCIATES, INC. HARMLESS FROM AND AGAINST ALL CLAIMS, DAMAGES, LOSSES AND EXPENSES, INCLUDING REASONABLE ATTORNEY'S FEES, THAT MAY BE ASSERTED AGAINST INDUSTRY ENGINEERING ASSOCIATES, INC. BY ANY PARTY. INDUSTRY ENGINEERING ASSOCIATES, INC. RESERVES THE RIGHT TO REVISE OR CHANGE THIS DOCUMENT AT ANY TIME, OR AS NECESSARY.

UNLESS OTHERWISE SPECIFIED: DIMENSIONS SHALL BE IN INCHES AND DECIMALS THEREOF.		DRAWN BY: _____	
SCALE: 1/2" = 1'-0"	DATE: 11/13/91	CHECKED BY: _____	DATE: _____
DESIGN: _____		APPROVED BY: _____	
PROJECT NO.: _____		SHEET NO.: _____	
TITLE: HEAVY LIFT SHEAR-LEG 130 FT. BOOM		DATE: 01-DEA-02	
DRAWN BY: _____		SCALE: 1/2" = 1'-0"	