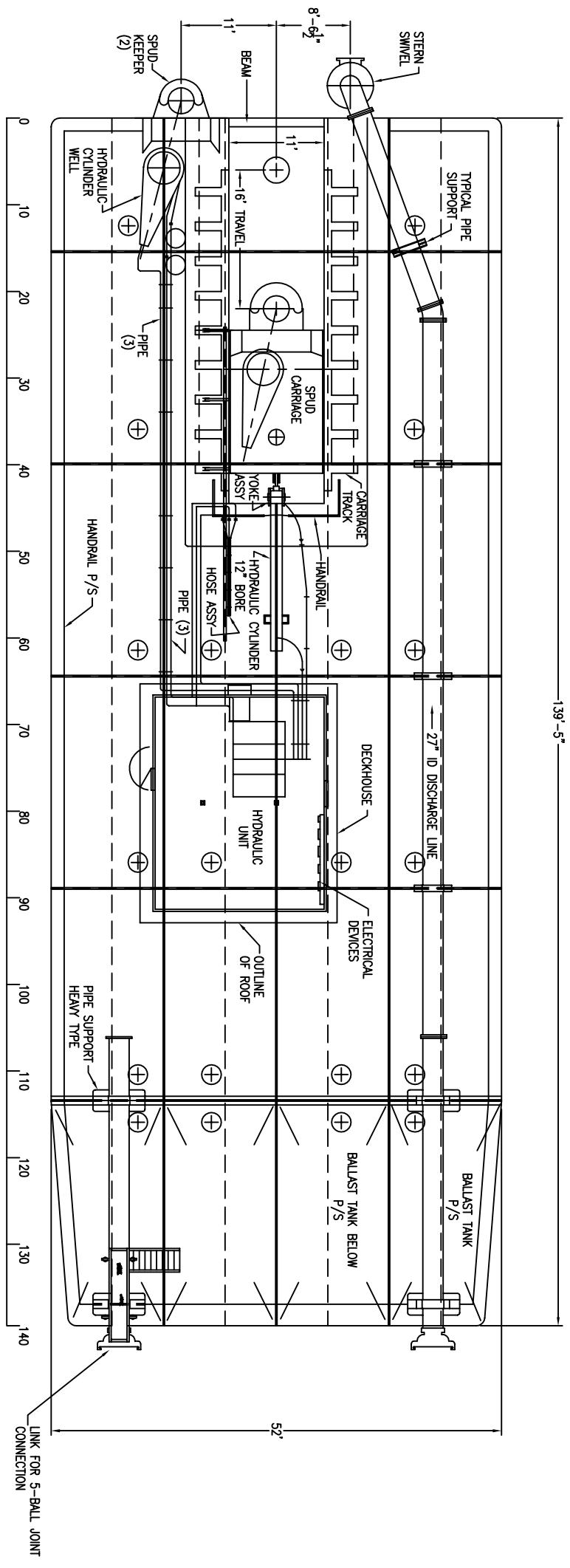
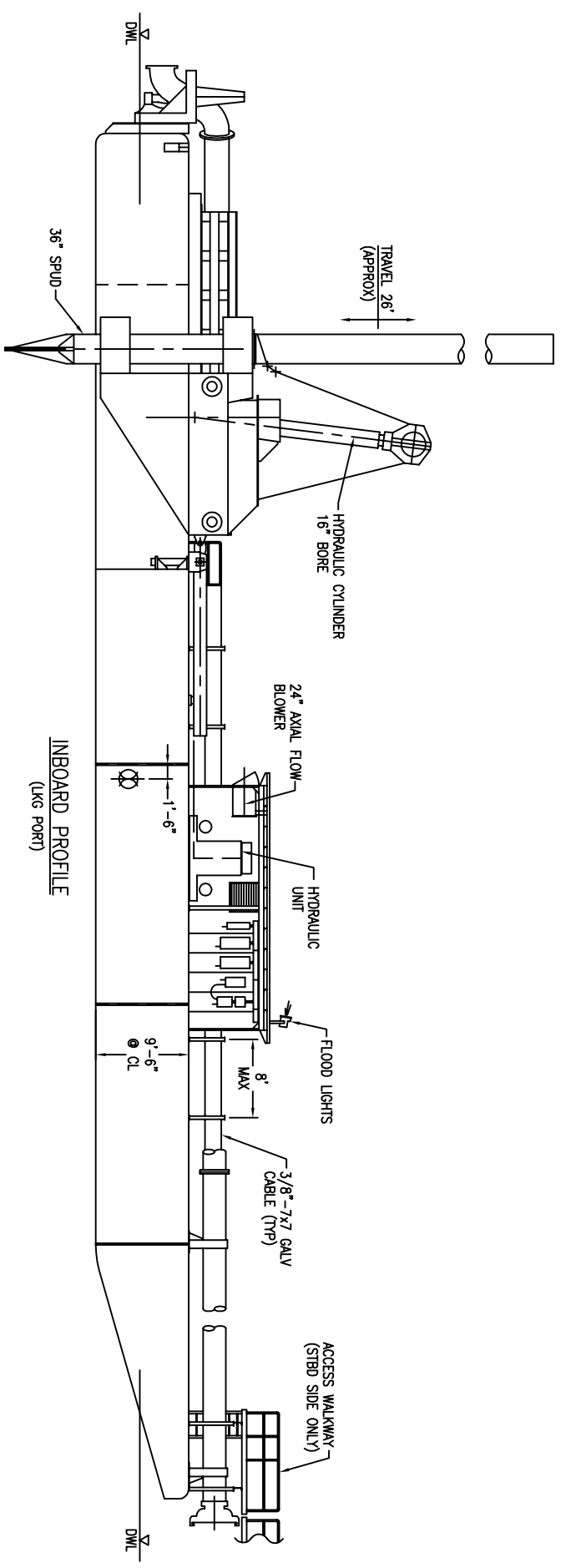


REVISIONS			DATE	APPROVED
ZONE	LTR	DESCRIPTION	11/13/01	-
-	A	VESSEL FILE		



MAIN DECK PLAN



INBOARD PROFILE
(LKG PORT)

- VESSEL PARTICULARS:
- 1) VESSEL CLASS: NONE
 - 2) ROUTE: LAKES, BAYS, SOUNDS
 - 3) TONNAGE (APPROX.): 400 GROSS DEADWEIGHT: N/A
 - 4) PROPULSION: NONE
 - 5) ACCOMMODATIONS: NONE
 - 6) FUEL: NONE
 - 7) WATER: NONE
 - 8) POWER REQUIREMENTS: ZSKW 480/3/60

REFERENCES

PROPRIETARY RIGHTS

THIS DOCUMENT DISCLOSES MATTER IN WHICH DUCOTE ENGINEERING ASSOCIATES, INC. HAS PROPRIETARY RIGHTS. NEITHER RECEIPT NOR POSSESSION HEREOF CONFERES OR TRANSFERS ANY RIGHT TO REPRODUCE, DISCLOSE OR USE THIS DOCUMENT IN ANY MANNER IN WHOLE OR IN PART OR ANY INFORMATION CONTAINED HEREIN EXCEPT BY WRITTEN AGREEMENT WITH DUCOTE ENGINEERING ASSOCIATES, INC. IN THE EVENT OF A PURCHASE OF THIS DOCUMENT, THE PURCHASER IS AUTHORIZED TO CONSTRUCT NO MORE THAN ONE DEVICE ACCORDING TO THIS DOCUMENT UNLESS OTHERWISE AGREED IN WRITING WITH DUCOTE ENGINEERING ASSOCIATES, INC. DUCOTE ENGINEERING ASSOCIATES, INC. RESERVES THE RIGHT TO REVISE OR CHANGE THIS DOCUMENT AT ANY TIME, OR AS NEED ARISES.

WARNING

THIS DRAWING IS FOR ILLUSTRATION PURPOSES ONLY. DO NOT USE FOR CONCEPT, DESIGN, CONSTRUCTION, OR, ANY OTHER PURPOSE.

CONTRACT NO.		DUCOTE ENGINEERING ASSOC., INC.	
DRAWN	TH	DATE	11/13/01
CHECK	-	TITLE	GENERAL ARRANGEMENT IDLER-BARGE WITH WALKING SPUD
DESIGN	-	SIZE	D
DESIGN ACTIVITY	-	FSCM NO.	01-DEAI-01
CUSTOMER	-	SCALE	1/8"=1'-0"
		RELEASE DATE	
		SHEET	1 of 1