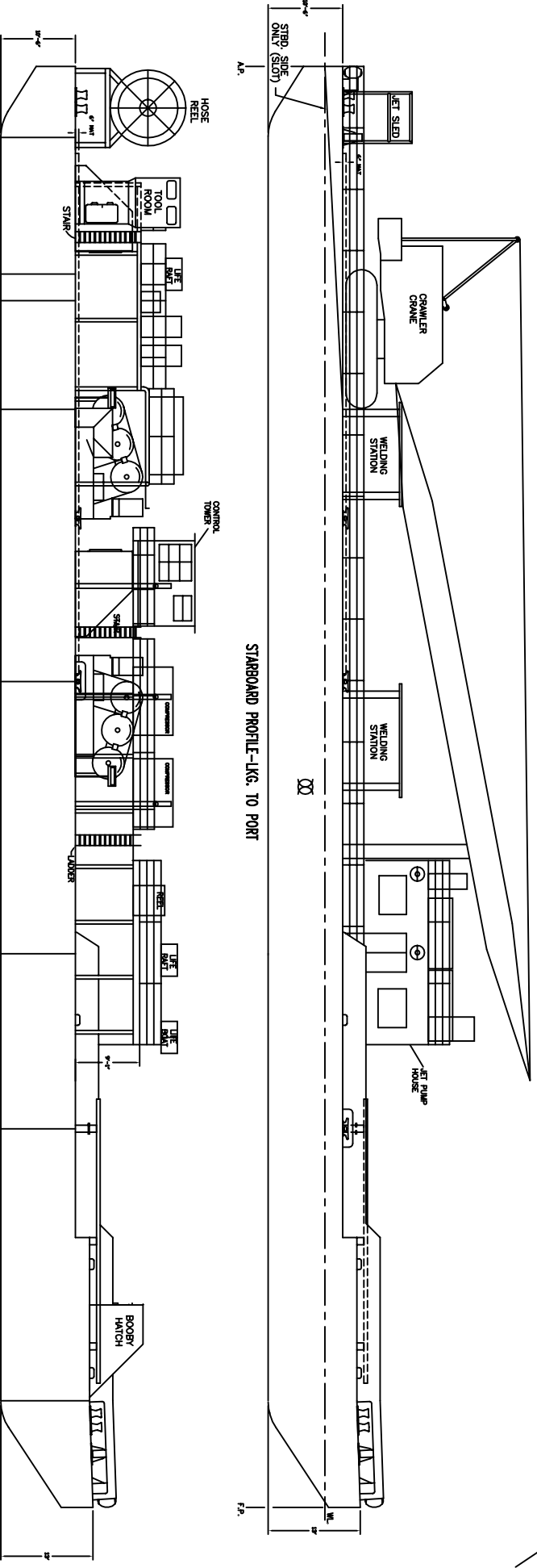
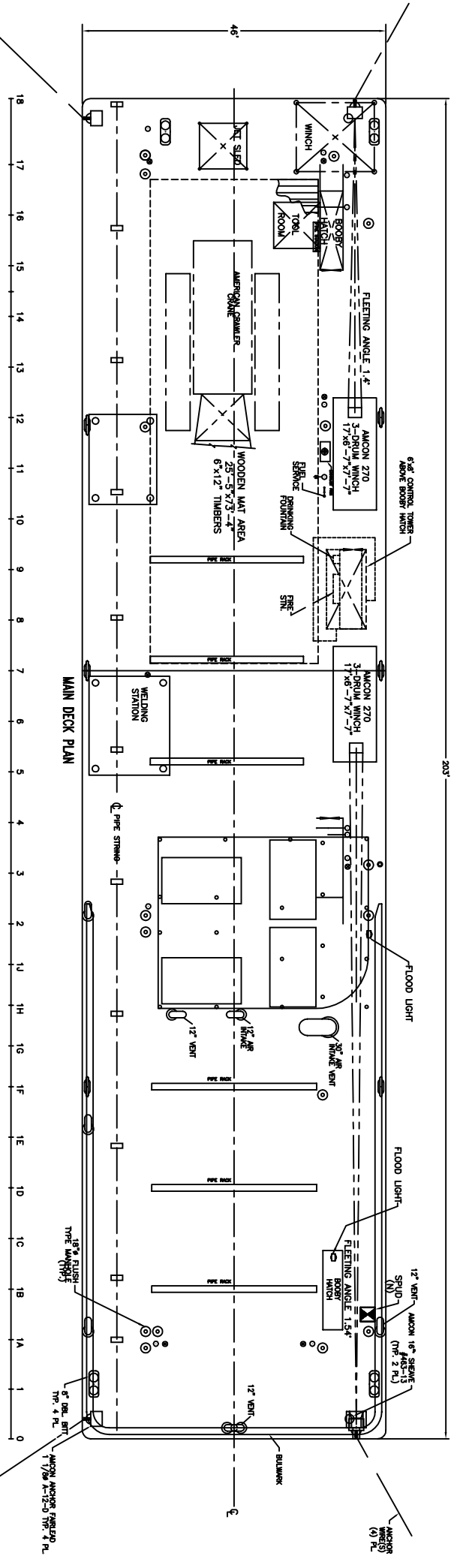


REVISIONS		
ZONE/LTR	DESCRIPTION	DATE
-		
A	VESSEL FILE	11/13/01



PROFILE-LIG. TO PORT

- VESSEL PARTICULARS:**
- 1) VESSEL CLASS: ABS OCEANS
 - 2) ROUTE: SHORE, LAKES, BAYS, SOUNDS
 - 3) TONNAGE (APPROX.): 1600 GROSS DEADWEIGHT, 375 TONS
 - 4) PROPULSION: NONE, 8-POINT ANCHOR SYSTEM
 - 5) ACCOMMODATIONS: 36 PERSONS
 - 6) FUEL: 60,000 U.S.G.
 - 7) WATER: 40,000 U.S.G.

CONTRACT NO. _____

DESIGNED BY: _____

CHECKED BY: _____

DATE: 11/13/01

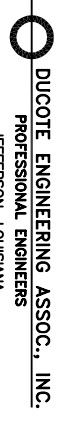
TITLE: PIPE LAY BARGE

BARGE BARGE

203' x 46' x 11'

SCALE: 3/32" = 1'-0" RELEASE DATE: _____

SHEET 1 of 1



WARNING

THIS DRAWING IS FOR ILLUSTRATION PURPOSES ONLY. DO NOT USE FOR CONCEPT, DESIGN, CONSTRUCTION, OR ANY OTHER PURPOSE.

PROPRIETARY RIGHTS

THIS DOCUMENT DISCLOSES MATTER IN WHICH DUCOTE ENGINEERING ASSOCIATES, INC. HAS PROPRIETARY RIGHTS. NEITHER RECEIPT NOR POSSESSION HEREOF CONFERRS OR TRANSFERS ANY RIGHT TO REPRODUCE, DISCLOSE OR USE THIS DOCUMENT IN ANY MANNER IN WHOLE OR IN PART OR ANY INFORMATION CONTAINED HEREIN EXCEPT BY WRITTEN AGREEMENT WITH DUCOTE ENGINEERING ASSOCIATES, INC. IN THE EVENT OF A PURCHASE OF THIS DOCUMENT, THE PURCHASER IS AUTHORIZED TO CONSTRUCT NO MORE THAN ONE DE VICE ACCORDING TO THIS DOCUMENT UNLESS OTHERWISE AGREED IN WRITING WITH DUCOTE ENGINEERING ASSOCIATES, INC. DUCOTE ENGINEERING ASSOCIATES, INC. RESERVES THE RIGHT OF REVISION OR CHANGE THIS DOCUMENT AT ANY TIME, OR AS NEED ARISES.