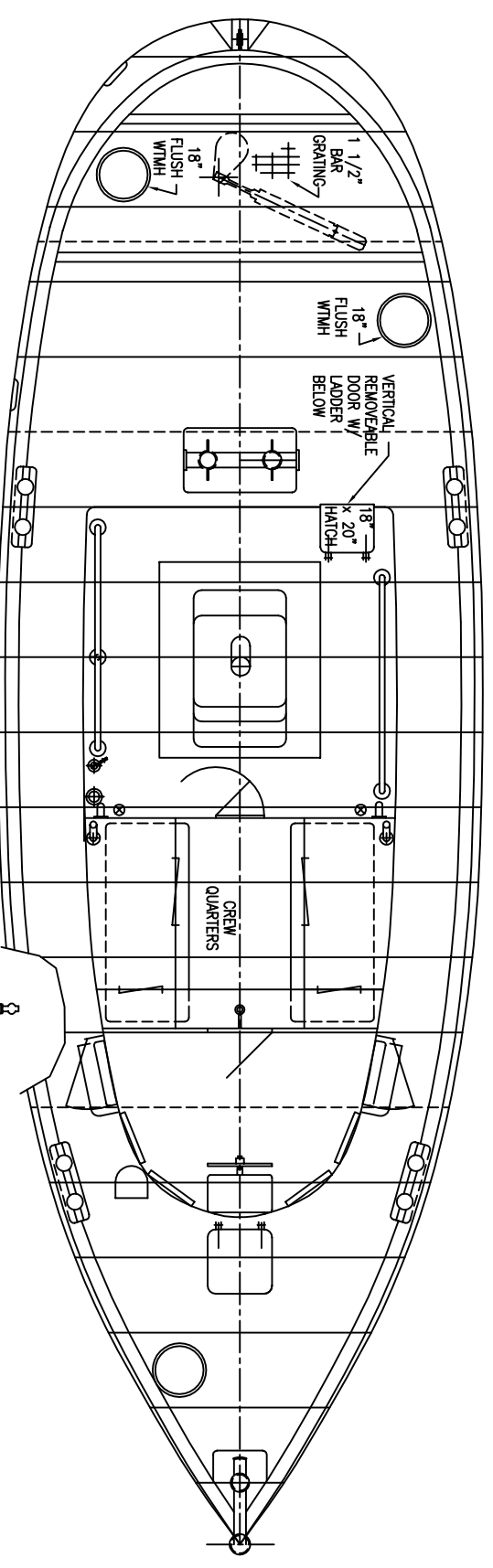
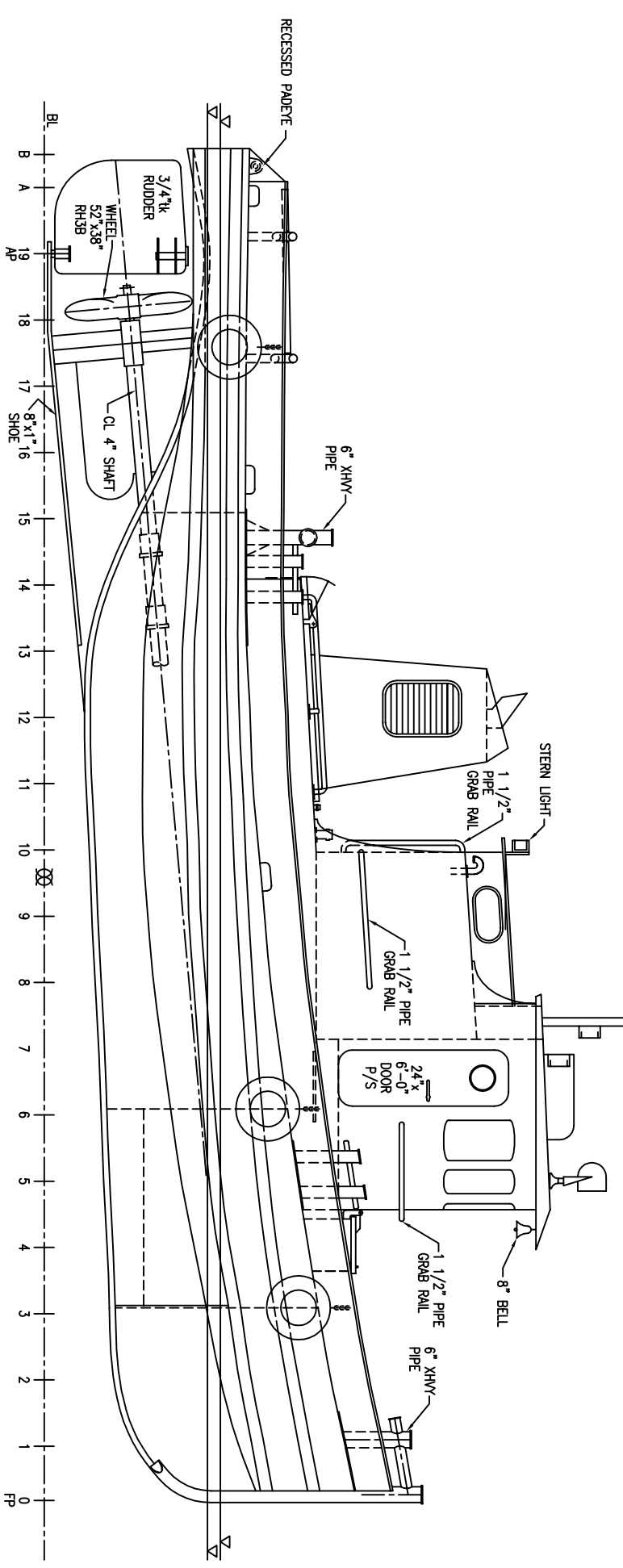


REVISIONS			DATE	APPROVED
ZONE LTR	DESCRIPTION		11/13/01	-
-	VESSEL FILE			



MAIN DECK PLAN



STARBOARD PROFILE

- VESSEL PARTICULARS:
- 1) VESSEL CLASS: NONE
 - 2) ROUTE: INLAND/LAKES/BAYS/SOUNDS
 - 3) TONNAGE (APPROX.): 61 GROSS DEADWEIGHT: N/A
 - 4) PROPULSION: 420 HP SINGLE SCREW
 - 5) ACCOMMODATIONS: 2
 - 6) FUEL: 2200 U.S.G.
 - 7) WATER: 300 U.S.G.

REFERENCES

PROPRIETARY RIGHTS

THIS DOCUMENT DISCLOSES MATTER IN WHICH DUCOTE ENGINEERING ASSOCIATES, INC. HAS PROPRIETARY RIGHTS. NEITHER RECEIPT NOR POSSESSION HEREOF CONFERES OR TRANSFERS ANY RIGHT TO REPRODUCE DISCLOSE OR USE THIS DOCUMENT IN ANY MANNER IN WHOLE OR IN PART OR ANY INFORMATION CONTAINED HEREIN EXCEPT BY WRITTEN AGREEMENT WITH DUCOTE ENGINEERING ASSOCIATES, INC. IN THE EVENT OF A PURCHASE OF THIS DOCUMENT, THE PURCHASER IS AUTHORIZED TO CONSTRUCT NO MORE THAN ONE DEVICE ACCORDING TO THIS DOCUMENT UNLESS OTHERWISE AGREED IN WRITING WITH DUCOTE ENGINEERING ASSOCIATES, INC. DUCOTE ENGINEERING ASSOCIATES, INC. RESERVES THE RIGHT TO REVISE OR CHANGE THIS DOCUMENT AT ANY TIME, OR AS NEED ARISES.

WARNING

THIS DRAWING IS FOR ILLUSTRATION PURPOSES ONLY. DO NOT USE FOR CONCEPT, DESIGN, CONSTRUCTION, OR ANY OTHER PURPOSE.

CONTRACT NO.		 DUCOTE ENGINEERING ASSOC., INC. PROFESSIONAL ENGINEERS JEFFERSON, LOUISIANA	
DRAWN	TH	DATE	11/13/01
CHECK	-	TITLE	DREDGE TENDER 48 X 16 X 6
DESIGN	-	SIZE	D
DESIGN ACTIVITY		FSCM NO.	
CUSTOMER	-	DWG NO.	
		SCALE	RELEASE DATE
	2		